



# Smart IoT Product Catalog

2019 | AirLive Smart Home



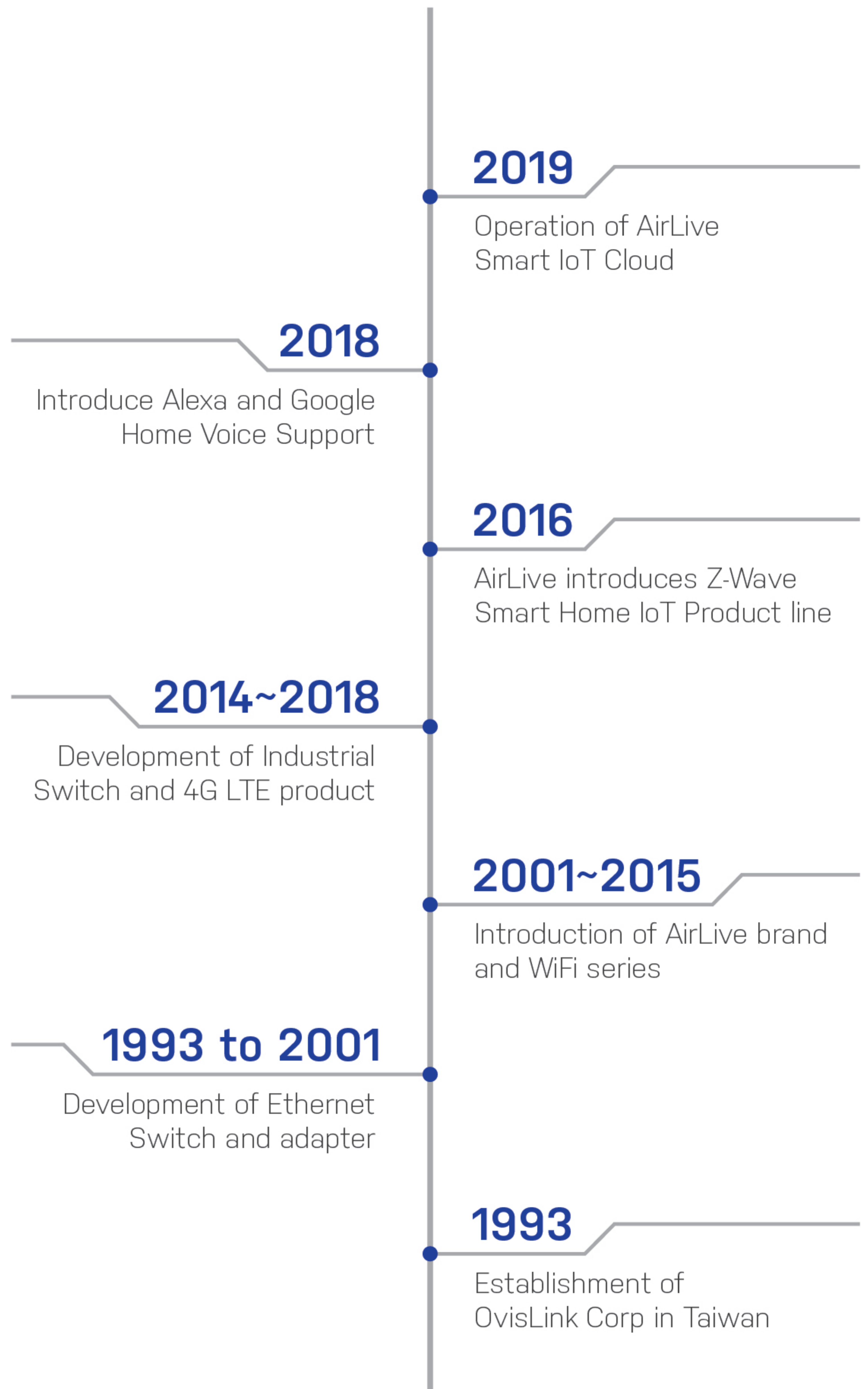


## Company Introduction

Since its establishment 25 years ago; AirLive, OvisLink Corp. has transformed itself numerous times as the technology world progresses.

However, the core values that we have accumulated and endeared stay the same. Great products are built upon solid user experiences, reassuring reliability, impeccable practicality, and sincere after-service.

Since 2016, AirLive has introduced a series of Smart Home products for DIY and S.I. installation. It requires almost zero setup. So you can get your smart home up and running quickly.







## Z-Wave Plus Technologies

AirLive's Smart IoT products are built upon the Z-Wave Plus technology. It is a wireless technology that is built purposely for IoT.



### Battery Life

Z-wave provides 2-3 years of battery life. More than 100 times comparing to WiFi



### Security

Z-wave Plus supports 128-bit AES encryption to secure the system from tampering



### 232 Devices

Each Z-Wave Gateway can connect up to 232 devices stably. It is far greater than WiFi and Bluetooth.



### Wall Penetration

The Z-Wave operates in ultra low frequency. That means it has much better wall penetration ability comparing to WiFi or Bluetooth



### MESH Network

Each AC Powered Z-Wave device acts as a wireless repeater to extend the wireless coverage



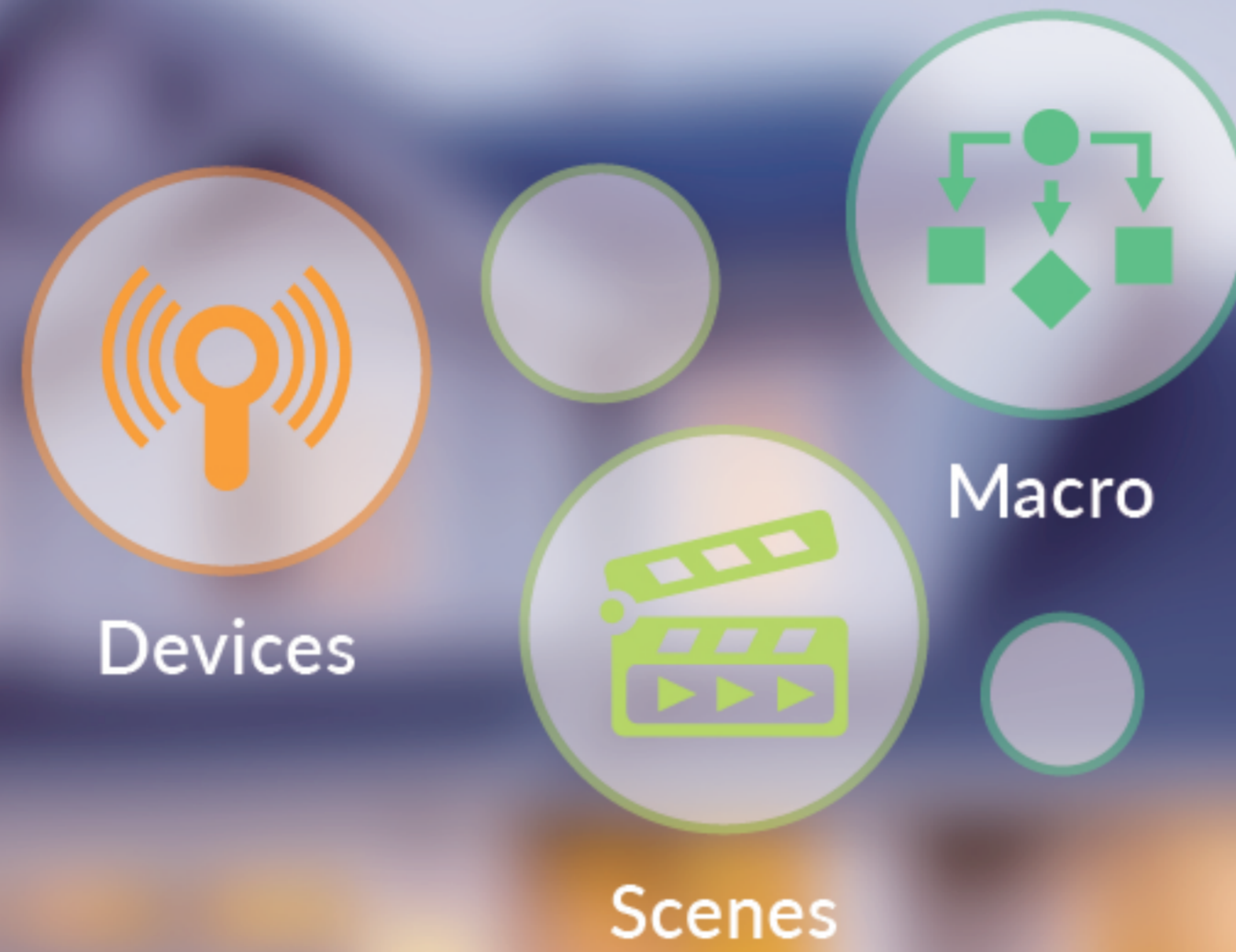
### Wake-Up Time

Z-Wave can wake up from sleep mode in less than 0.5 seconds. It is far shorter than 30 seconds using WiFi. This makes it suitable for IoT



# Humanized Automation

AirLive offers numerous ways to control your Smart Home, you just need to choose which is the most natural to you.



## User Friendly APP

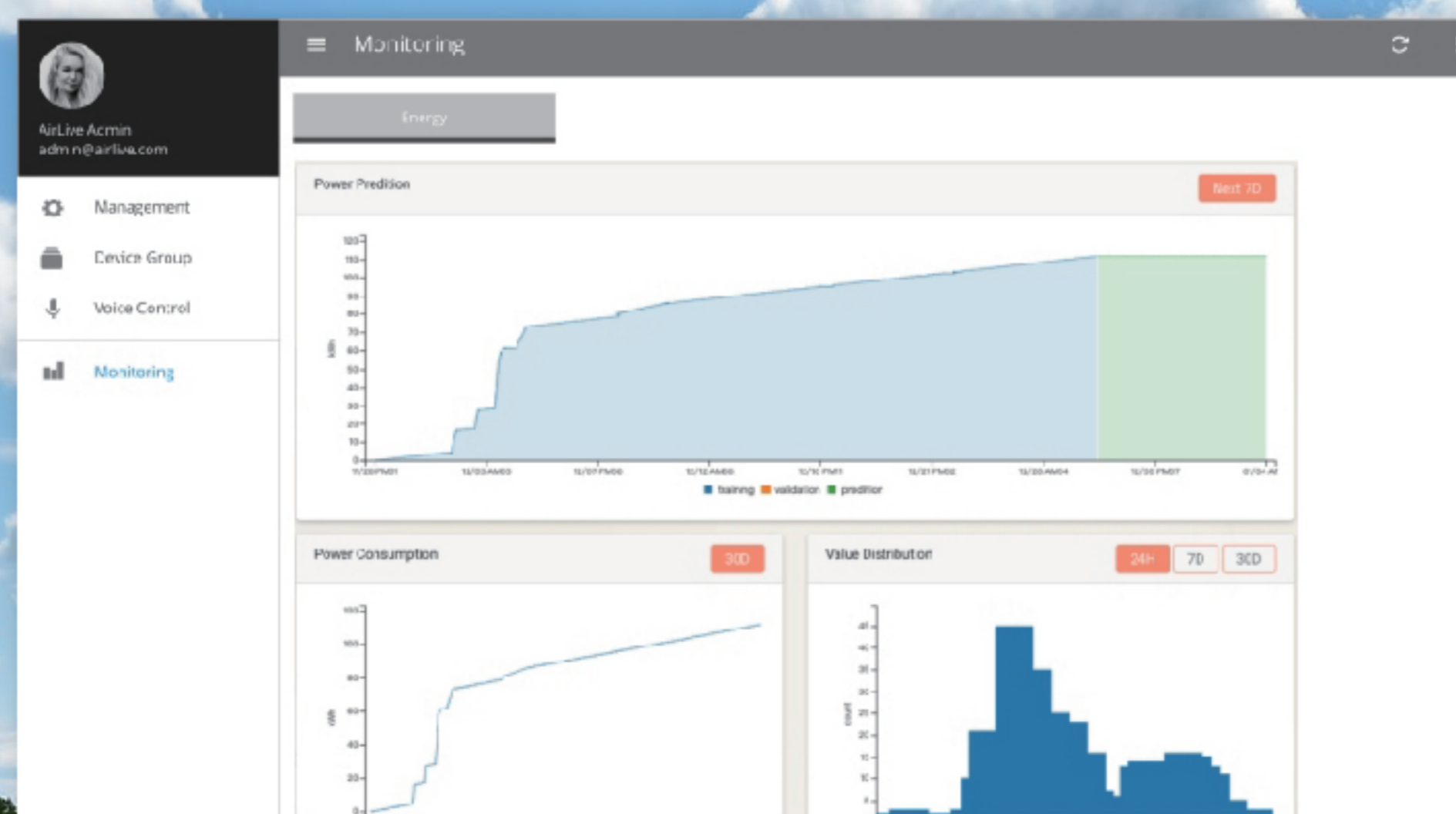
Our user friendly smart phone APP that includes sophisticated features such as Scenes and If-this-then-that Macros which make all automation possible.

## Voice Control

Comprehensive voice recognition supports including Amazon Alexa and Google Home. Each command is mapped to a scene you created. So, you can just say "I am home" then all the lighting and air conditioning are set according to your wish

## Smart IoT Cloud

Our cloud allows auto-detection when leaving your house. Moreover, it provides the possibility to multi-home, multi-user, trigger history, and energy consumption





# Voice Control

Through Amazon Alexa or Google Home, you can easily control your smart home by voice. AirLive supports both Alexa Home Kit and Alexa Skill Kit. So you can choose to speak directly or customized according to the Scene. It is both powerful and convenient.

## Map to a Scene

Create a Scene using your APP called Party. So, you can just say "Party Time" and the lights and appliance can be turned on.



Google Home

amazon alexa

AirLive support Alexa's Smart Home Skill directly. So you can just say "Turn on the light" directly to voice control the automation

Both Google Home and Google Assistant are supported. That means you can do voice control through both your smart phone and smart speaker.





# SmartLife Plus APP

## Scenes

Create different combination of activities using the scene tools. You can create a scene base on a location such as living room. On the other hand, you can also create a scene base on an occasion such as party mode, theater mode, or welcome home schemes. You can even set automatic activities when you are away from home.



Turn on the Light



Close the curtain



Turn on Air conditioner



Turn on the TV



Scenes



# IFTTT (If this then that) Macros

The SmartLife Plus supports IFTTT (If this then that) protocol. Therefore, you can setup certain conditions to trigger some events. So whether it is for home security, temperature control, or home automation, the APP has a solution for you.



*If*

Illumination < 10%

*and*



Time is after 6pm

*Then*

Turn on the Light

*and*



Close the curtain

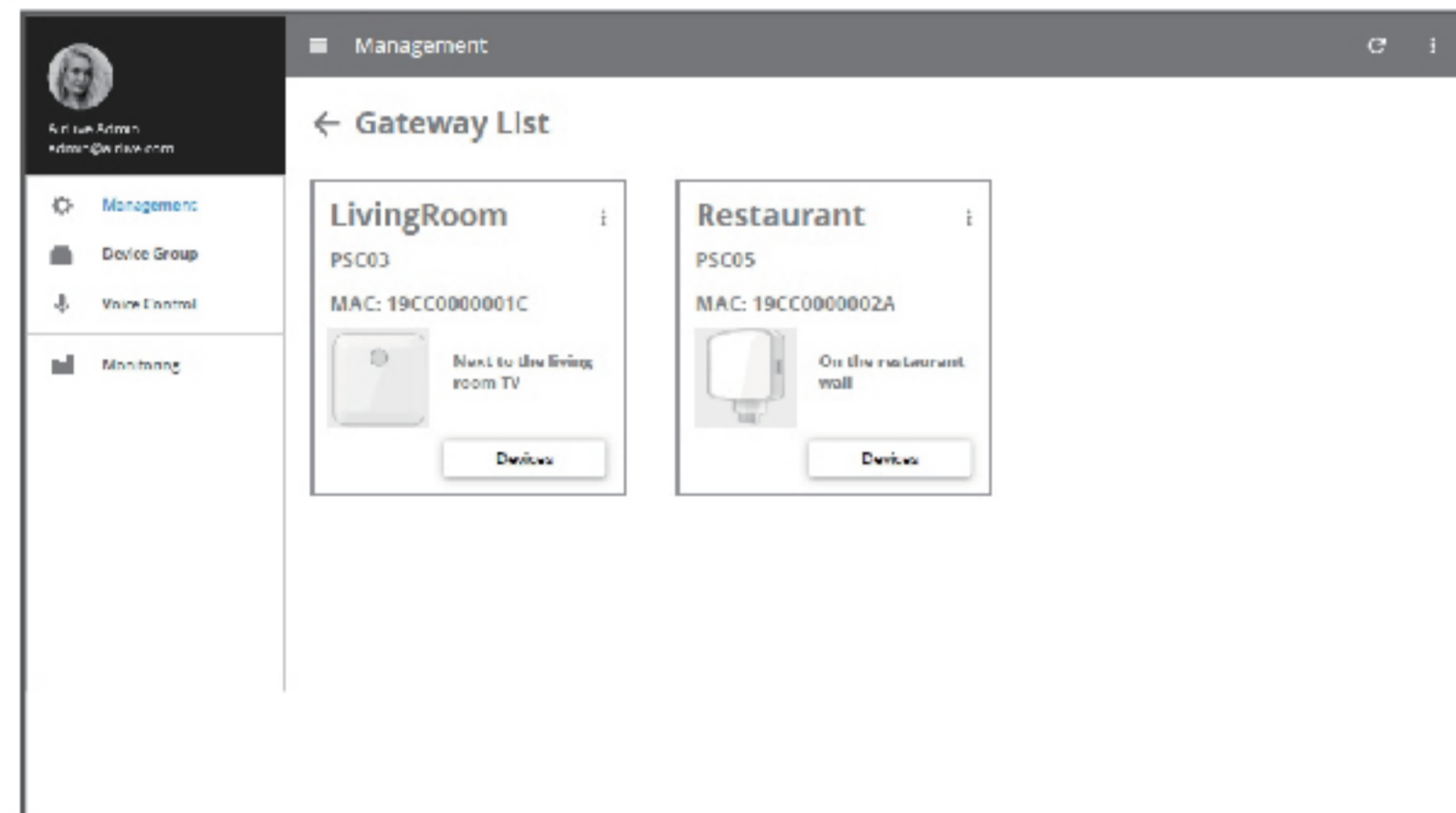


Macros



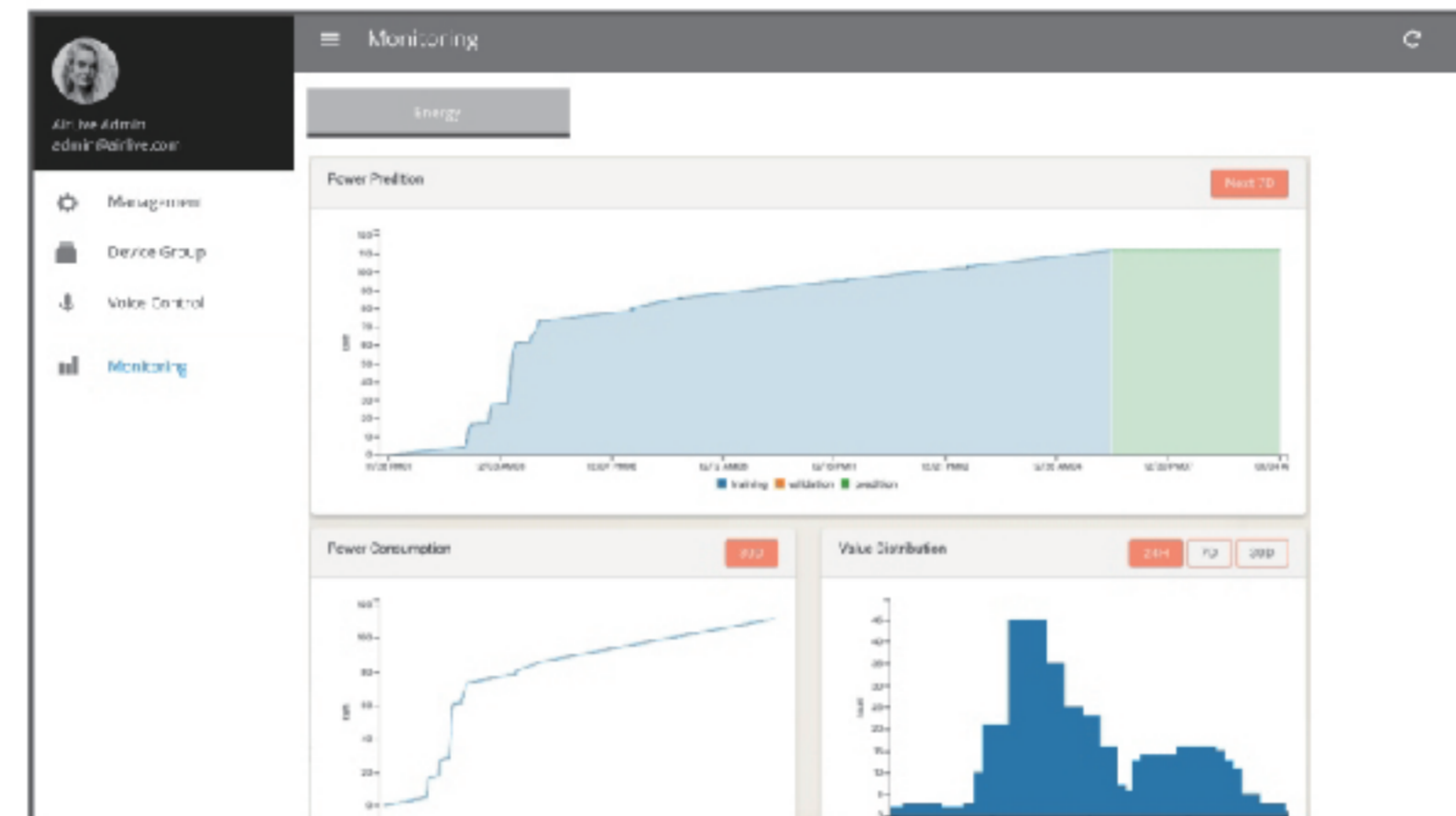
# Smart IoT Cloud

AirLive provides smart IoT cloud that allows you to manage multiple gateways in multiple locations. You can remotely turn on/off functions or watch the overall statistics. It is ideal for large home or community deployment.



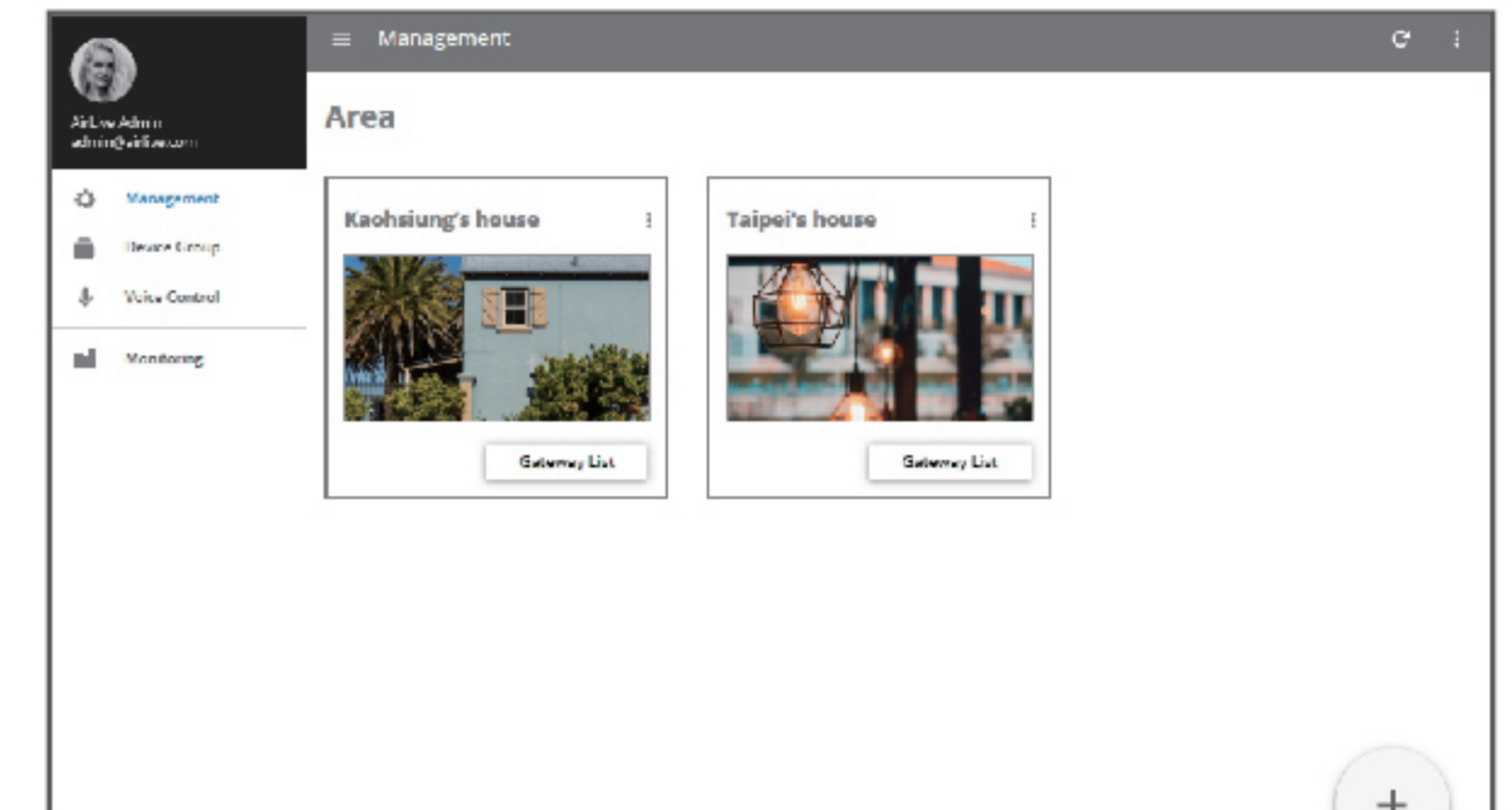
## Multiple Gateways

The IoT Cloud enables you to manage multiple gateways. Therefore, if you have a large house or multiple houses, the IoT Cloud allows you to set Scene or Macro across different gateways.



## Show the Statistic

See how many times the windows and doors have been triggered in the week. What is the energy consumption totally.



## Multiple Locations

You can manage different houses in different locations across the world





# Smart Home IoT: Making your home a better place

With the advancement of IoT technology, Smart Home is not just something nice to have. AirLive has packaged them to different practical applications. For the first time, Smart Home is something that one must have after they have gone through the AirLive experience.



Home Security



Home Automation



Elder Care



Parental Control



Energy Saving



## AirLive Smart IoT



# Atrium

When someone opens the door, the SI-101 3-in1 door sensor will alert you when you are not home. The SC-300W IP Camera lets you see who has entered the house. The SI-102 PIR sensor will turn on the light when a person is detected in the atrium.



SC-300W  
3MP  
IP Camera

SD-102  
Light  
Bulb dimmer

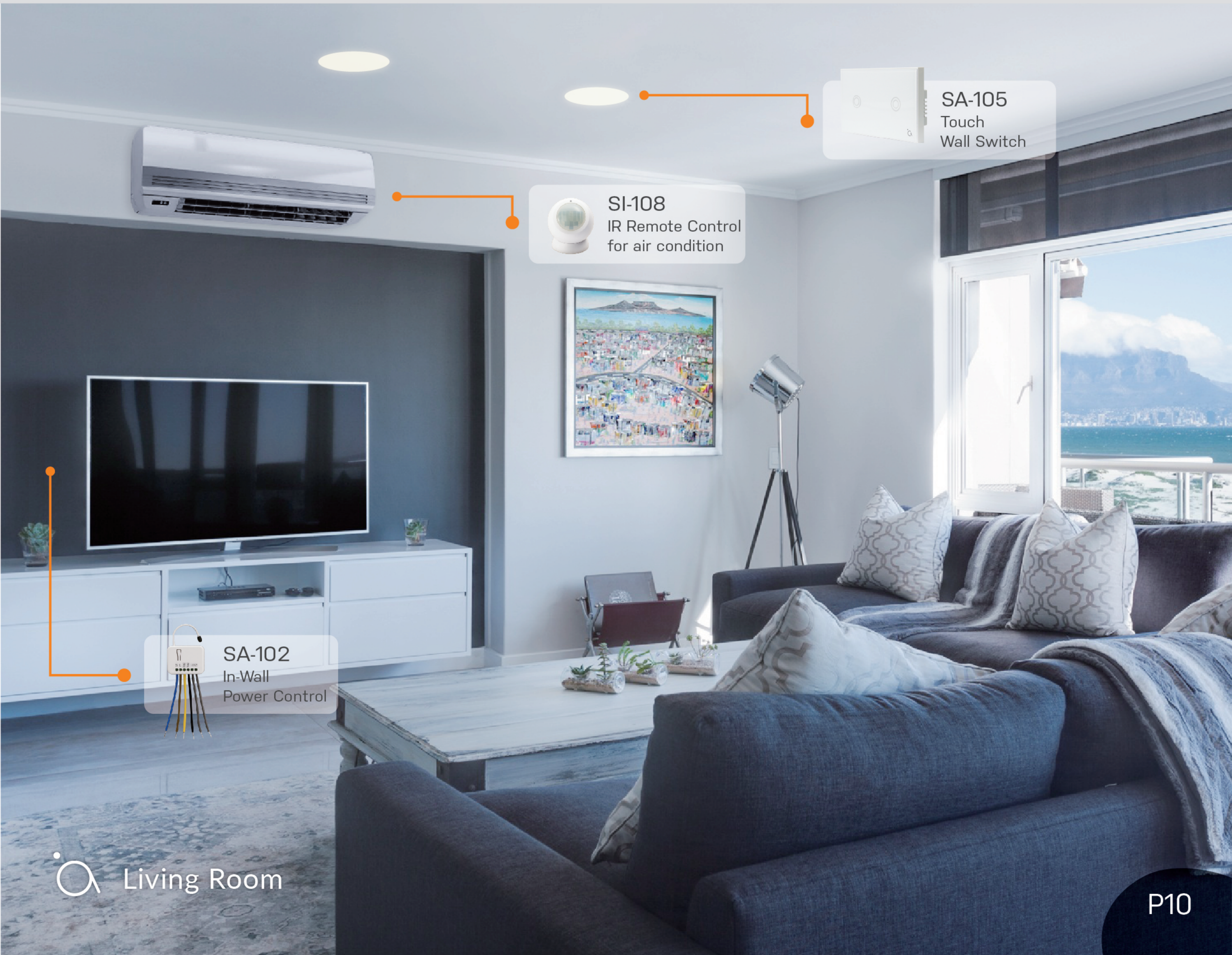
SI-102  
PIR Motion

SI-101  
3-in-1 Sensor



# Living Room

Install the In-Wall power control to your TV. You can then limit the time when the TV can be turned on. The SI-108 universal remote control can turn on your TV or your air conditioner according to the temperature. With SA-105 Touch Wall Switch light dimmers installed, you can turn on the essential lights for the theater mode.



**SA-105**  
Touch  
Wall Switch

**SI-108**  
IR Remote Control  
for air condition

**SA-102**  
In-Wall  
Power Control



## Kitchen and Dining Area

Add our SI-104 smart Smoke Detector in your kitchen in case there is a fire. It will alert you where ever you are. Install the SI-103 Flood Sensor under the sink, it will report water leakage from the faulty water pipe.



SI-104  
Smoke  
Detector



SI-103  
Water/Flood  
Sensor



Kitchen and Dining Area



# Bedrooms


With SD-101 installed, you can voice control the lights. In addition, the SD-103 RGBW LED controller can set your color LED in different lighting schemes to create ambiance on occasion.



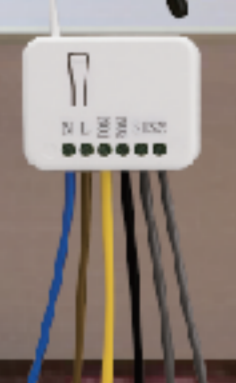
SD-103  
RGBW LED  
controller



SD-101  
In-Wall  
Light Dimmer



Voice control box



SA-102  
In-Wall  
Power Control



# Stairway

In the stairway, you can install the SI-102 Motion Sensor and the SA-102 In-Wall Power Control. So the light will turn on automatically when a person is detected



SI-102  
PIR Motion



SA-102  
In-Wall  
Power Control



# Garage

Setup your IFTTT rules so that your garage will automatically open when you are approaching your home. In addition, you can check if you have forgotten to close the garage door. If yes, you can remote close the door by using our APP.



SA-103  
Roller Shutter  
Control

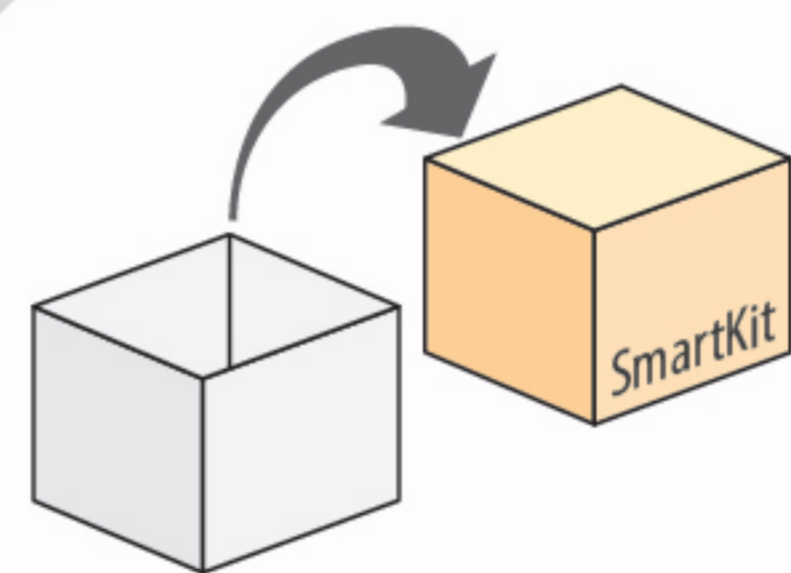
SC-300W  
3MP  
IP Camera



# Simplicity is Just a Start

Many vendors say their smart home is use to use, but it gets harder than you think when you actually try it. When we say simple, we mean the products require almost zero setup. All our Smart Home IoT starter kits come pre-paired which means they are ready to go right out of the package. It just couldn't get any simpler.

## STEP 1



Unpack and Place Sensors in locations

## STEP 2



Remove the battery Protected tag

## STEP 3



Download the APP and Discover the gateway



**SG-101**  
Z-Wave Gateway with Siren

**SI-102**  
PIR Motion

**SI-101**  
Door, temperature, brightness 3 in 1

**SmartCube-300W**  
3MP IP Camera

**SP-101**  
Smart Plug





## For both DIY and Installers

AirLive offers DIY kits with come pre-paired for easy installation. For professional installers, we also offer in-wall switch, dimmer, and curtain/garage opener. Whatever is suitable for your market, we have a solution for you.

# DIY and Installers





# Pervasive Compatibility

AirLive's IOT gateway is integrated with hundreds of third party devices such as Yale locks, Philips Hue, and many more home appliances.

Moreover; through the IFTTT, you can also work with thousands of product from other makers.

Therefore, your AirLive Smart Home will work with ever expanding list of new IoT products on the market.





# Sensors



## SI-102 PIR Motion Sensor

Detects Motion  
Adjustable Distance  
Up to 8 Meter  
Magnetic Cover  
2 to 3 year battery life



## SI-101 3 in 1 Sensor

Door and Windows Sensor  
Temperature Sensor  
Illumination Sensor  
2 to 3 year battery life



## SI-104 Smoke Detector

Alert you when there is  
fire or smoke  
Built-in Alarm  
Low battery life warning



## SI-103 Water/Flood Sensor

Detects Water Leak  
Safe Guard your bathroom  
and Kitchen  
2 to 3 year battery life





## SD-103 RGWB LED Controller

---

Adjust Color of your RGBW LED Strip  
Turn on/off the LED by APP or Voice  
Dimmer Control



## SA-104 Push Button Wall Switch

---

Control 2 lighting devices  
Turn on/off light by APP or voice  
Replace your current wall switch  
Control lighting or power



## SD-104 Wall Dimmer

---

Adjust the brightness level of your light  
Turn on/off and brightness level by APP or voice  
Replace your current wall switch



## SA-105 Touch Sensitive Wall Switch

---

Control 2 lighting devices  
Touch activate and glass panel  
Turn on/off light by APP or voice  
Replace your current wall switch



# Actuators



## SD-102 Light Bulb Dimmer

Convert your light bulb to smart lighting  
Dimmer Control through the APP  
E27 to E14 screw type



## SI-108 IR Remote Control For Air Con

Control your air conditioner  
Built-in AirCon List  
Ability to learn the command from another remote



## SmartCube-300W 3MP IP Camera

3 Megapixel Recording  
Built-in PIR sensor  
Built-in Temperature Sensor  
SD Card Slot



# Actuators



## SP-101 Smart Plug

---

Turn On/Off appliances  
Energy consumption monitoring  
Power scheduling  
3000 Watt Resistive Load  
Z-Wave Repeater



## SA-102 In-Wall Power Control

---

Turn On/Off Lighting  
Turn On/Off power devices  
Up to 1560W Resistive Load  
Z-Wave Repeater



## SD-101 In-Wall Light Dimmer

---

Adjust the brightness of your  
dimmer light  
Z-Wave Repeater  
Install into the wall socket



## SA-103 Roller Shutter Control

---

Control the smart curtain  
Control garage door  
AC Type  
Z-Wave Repeater



# Controller



## SG-101 Z-Wave Gateway with Siren

Z-Wave Plus gateway  
Built-in 11n WiFi  
RJ-45 Port  
6-tone Siren  
Heart of AirLive IoT devices



## SB-101 Emergency Button

Call for Help Button  
Button for set the alarm on  
Button for set the alarm off  
Rechargeable battery



## SR-101 Smart Button

Adjust brightness of the lighting  
Adjust the curtain opening  
Timer Control  
Rechargeable battery





OvisLink Corp. Version 190701-01

5F, No.6, Lane 130, Min-Chuan Rd., Hsin-Tien Dist.,  
New Taipei City 231, Taiwan  
TEL: +886 2218 6888 E-mail: info@airlive.com



AirLive Smart Life  
Plus APP



[www.airlive.com](http://www.airlive.com)

© 2019 OvisLink Corporation, All Rights Reserved

